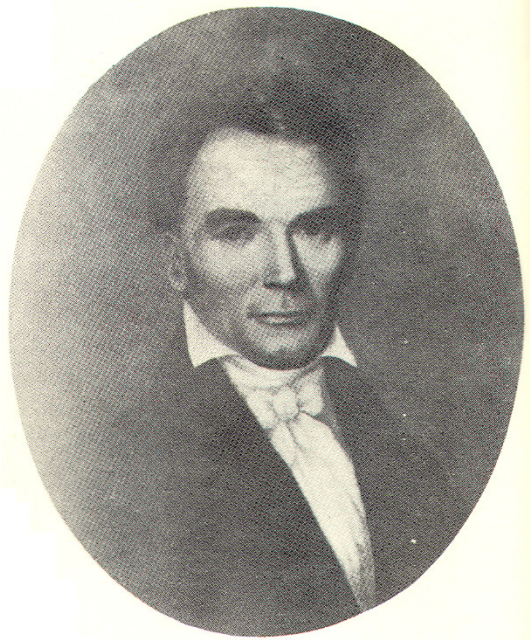


## Stephen P. Chapin

( - 1 Oct 1845)

---

**Chapin.** On the 1st instant, the Rev. Stephen Chapin, D.D., aged 67 years. His friends and acquaintances are invited to attend his funeral which will take place on Friday at 10 o'clock a.m. at his late residence near Benning's bridge.



Stephen Chapin, D.D., second President, 1828-1841. (University Collection.)

*The National Intelligencer, Oct. 22, 1845*

### **The Late Dr. Chapin**

At a meeting of the Board of Trustees of the Columbian College, held on the 17th instant, the following resolutions were unanimously adopted:

Resolved, That the decease of the Rev. Stephen Chapin, D.D., who was for many years President of the College, and at the time of his death one of its Trustees, affects the Board with feelings of sincere sorrow and regret.

Resolved, That the long-continued and effective services rendered to the College by Dr. Chapin, as well in the department of instruction as in the promotion of the financial and other interests of the Institution, in performing which he endured arduous toils and made many sacrifices, claim for this memory a lasting place in the affections of the members of this Board, and of all friends of the College.

Resolved. That the members of the Board sympathize with the family of the lamented and honored deceased in the afflictive bereavement which they have sustained, and assure them of their sincere condolence;

and that the Secretary of the Board be directed to communicate to them a copy of the above resolutions.

President of George Washington University (Columbian College), 1828-1841.

*Will of Rev. Stephen Chapin, of Co. of Washington (dtd. Aug. 11, 1845, probated Oct. 24, 1845; Book 5, pp. 423-425; O.S. 2579; Box 17)*

To wife Sarah Chapin, all household and kitchen furniture and library; 1/3 of real estate.

To son Stephen Rawson Chapin, \$1, he having heretofore received his portion of my estate.

To son Erastus Chapin, \$1, he also having heretofore received his portion of my estate.

To daughter Hannah Chapin, all my manuscript writings.

To grandson Edward Garland Sydnor, \$1.

To son Heman Lincoln Chapin, all residue of estate.

Exr. To provide a comfortable home for beloved daughters Hannah and Mary Chapin as long as they may wish to reside with him, and that they have for their use the south upper room in the new building.

Exr.: Heman Lincoln Chapin, son

Wits.: Thomas Haynes; James Dobbyn; William Ruggles